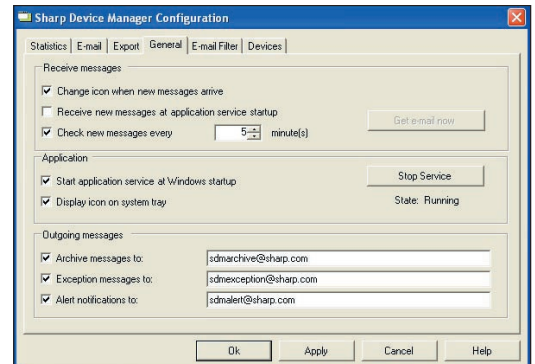


Maximize Your Time and Improve Your Bottom Line with Automated Meter Reads and Quick, Efficient Billing.

As a leader in the office automation industry, Sharp is among the first to offer software that automates the collection process for meter reads. Designed specifically to enhance Sharp's R.E.D. (Remote E-mail Diagnostics) technology, Sharp Device Manager receives incoming R.E.D. e-mails, collects the meter reads, and automatically forwards the data to the dealer's billing system.

Maximize your valuable time and service your customer's needs more efficiently with Sharp Device Manager.



Sharp Device Manager Configuration Screen



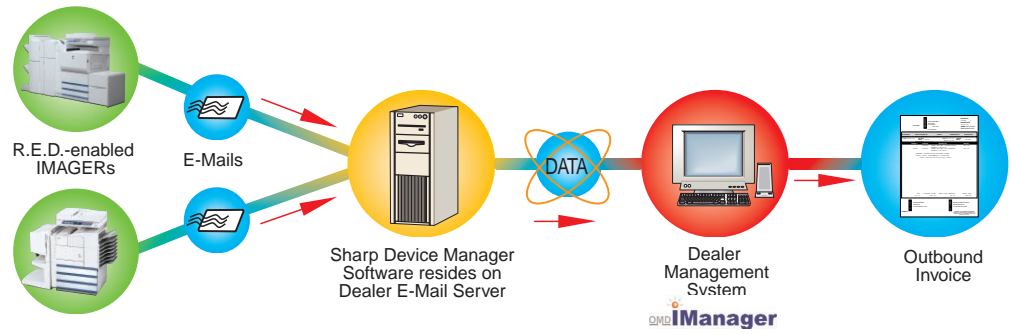
key features

- Virtually **eliminates the need to manually call** each account for a meter read
- **User-friendly interface** is easy to configure
- **Can be customized** for each account's billing cycle
- **Enhances customer relationships**
- **Provides error reporting** with e-mail notification
- **Helps reduce administrative paperwork**
- Version 1.0 includes support for the OMD iManager system, with support for additional modules compatible with other management systems available in the near future



How does it work?

Sharp Device Manager retrieves e-mails and extracts meter reads and other machine data from an account's R.E.D.-enabled IMAGER. The data is then converted by the Device Manager into a customer-ready format that is then forwarded to the dealer's management system. With OMD iManager, invoices can be automatically generated to coincide with each account's billing cycle, reducing time, administrative paperwork, and overall costs.



Supported MFPs

Reports/Models	Multifunction Devices ¹				Printers		Fax
	AR-M160/M205 ² AR-M162-M207 ² AR-168 ²	AR-M237/M277 AR-M350/M450	AR-M355/M455 AR-M550/M620/M700	AR-MC260M ³ AR-BC260M/BC320M ³	AR-P350 AR-P450	AR-C260P ³	FO-DC550 ²
Machine Total Output ⁴	Yes	Yes	Yes	Yes	Yes	Yes	Yes
Machine Total Copies	Yes	Yes	Yes	Yes	—	—	Yes
Machine Total Prints	Yes	Yes	Yes	Yes	Yes	Yes	Yes
Machine Total Scans	Yes	Yes	Yes	Yes	—	—	Yes ⁵
Account Code Total Output ⁴	—	Yes	Yes	Yes	Yes	Yes	—
Account Code Total Copies	—	—	Yes	Yes	—	—	—
Account Code Total Prints	—	—	Yes	Yes	Yes	Yes	—
Account Code Total Scans	—	—	Yes	Yes	—	—	—

¹ Sharp Device Manager also supports AR-235/275/287/337/407/507

² Requires AR-NB2/NB3

³ Color devices provide breakout for black and full color. For copy totals, single color is also provided.

⁴ Total output does not include scans

⁵ FO-DC550: All scans are counted as monochrome

operating system support

Windows® NT 4.0 operating system family (Service Pack 6a—SP6a), Windows 2000 operating system family, Windows XP operating system family, Windows 2003 operating system family

e-mail server support

Microsoft Exchange Server version 5.0 and above, Lotus Domino server version 4.5 and above, UNIX POP3 (RFC 1939) and SMTP (RFC 821) server with any version that supports RFC 1939 and RFC 821 standards. The server must have POP3 and SMTP enabled at the site level, the server level, and the mailbox level. The server must have POP3 and SMTP.

software requirements

- Sharp Remote E-Mail Diagnostics (R.E.D.) must be activated on the MFPs.
- The dealer management system must be PC compatible and include a database that can import data.
- All incoming e-mail accounts, configured in the Sharp Device Manager application, must be POP3 (RFC 1939) enabled. The outgoing e-mail account must be SMTP (RFC 821) enabled.

Device Manager server* requirements

Pentium II 400MHz, 128 MB RAM, 100 MB of free disk space

*Dedicated server not required

Design and specifications subject to change without notice.

Sharp is a registered trademark of Sharp Corporation. All other trademarks and registered trademarks are property of their respective holders.



Sharp Electronics Corporation
 Sharp Plaza, Mahwah, NJ 07430-1163
 1-800-BE-SHARP
www.sharppusa.com

